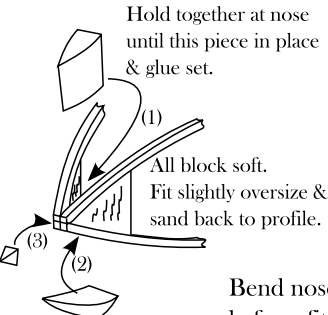
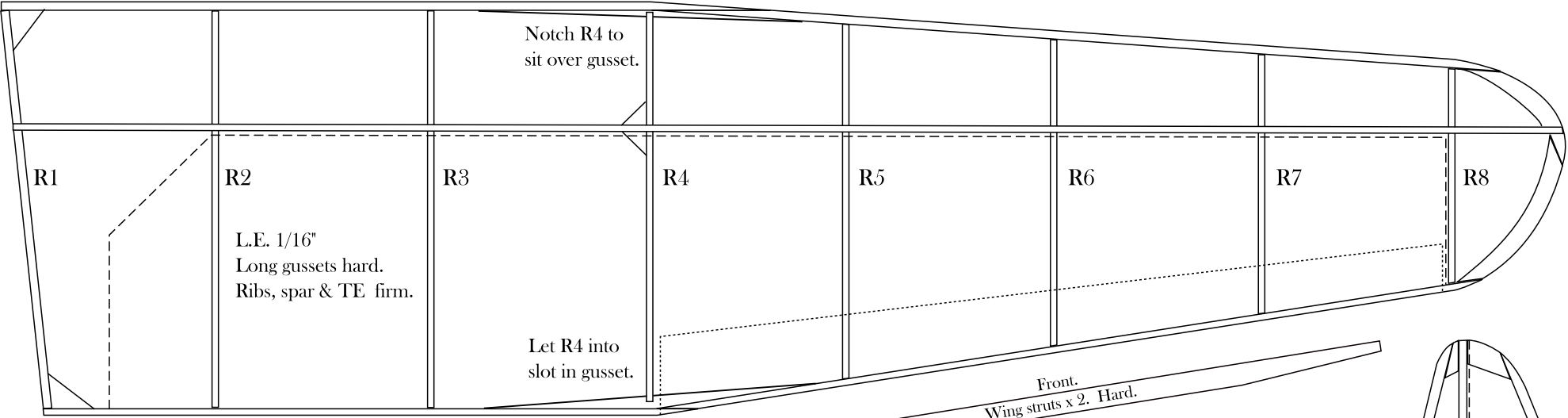
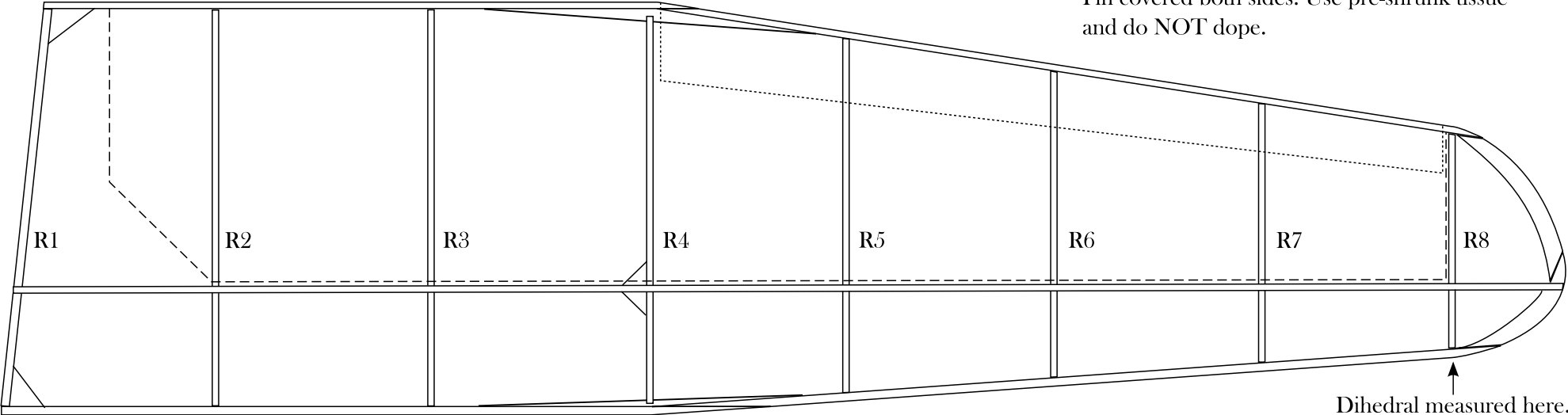


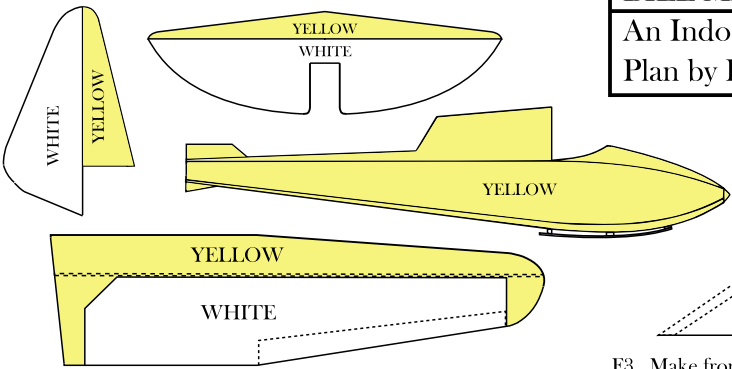
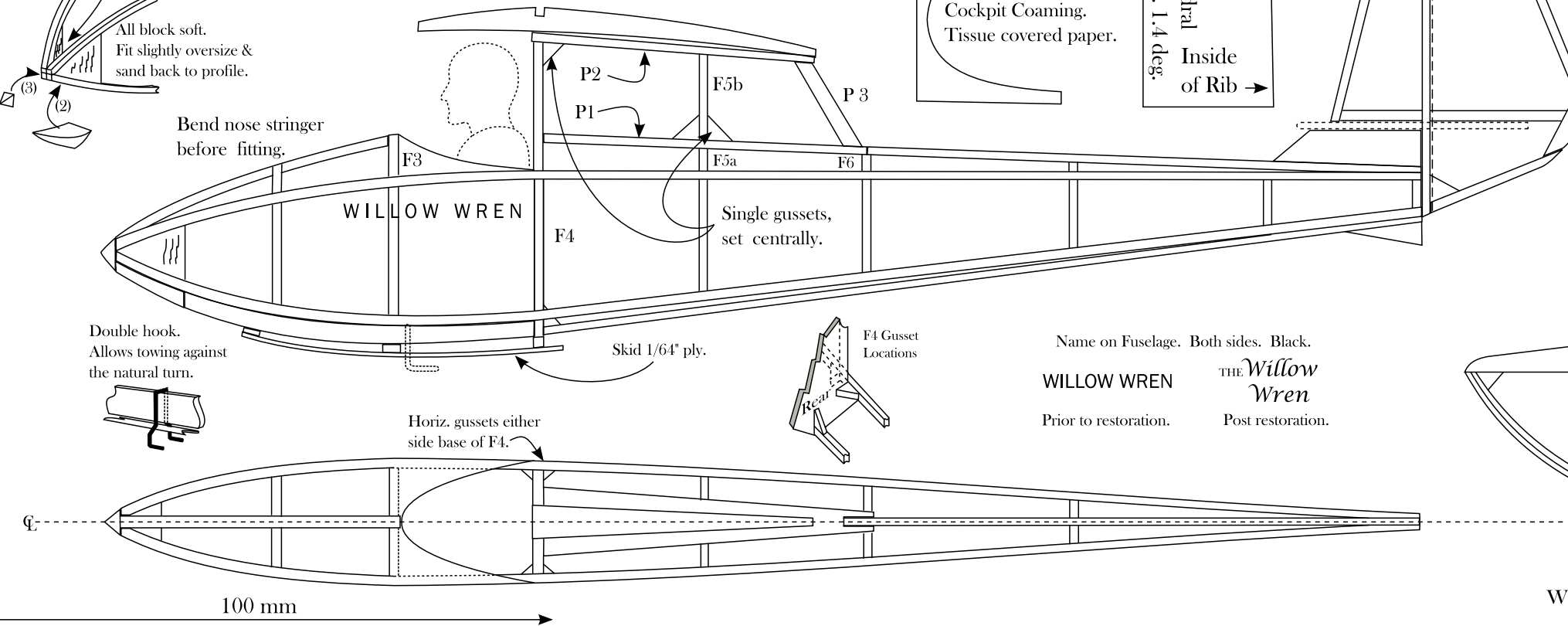
All wood 1/20" balsa strip & sheet unless otherwise indicated.

Wing & stabilizer covered on top surface only.
Fin covered both sides. Use pre-shrunk tissue and do NOT dope.

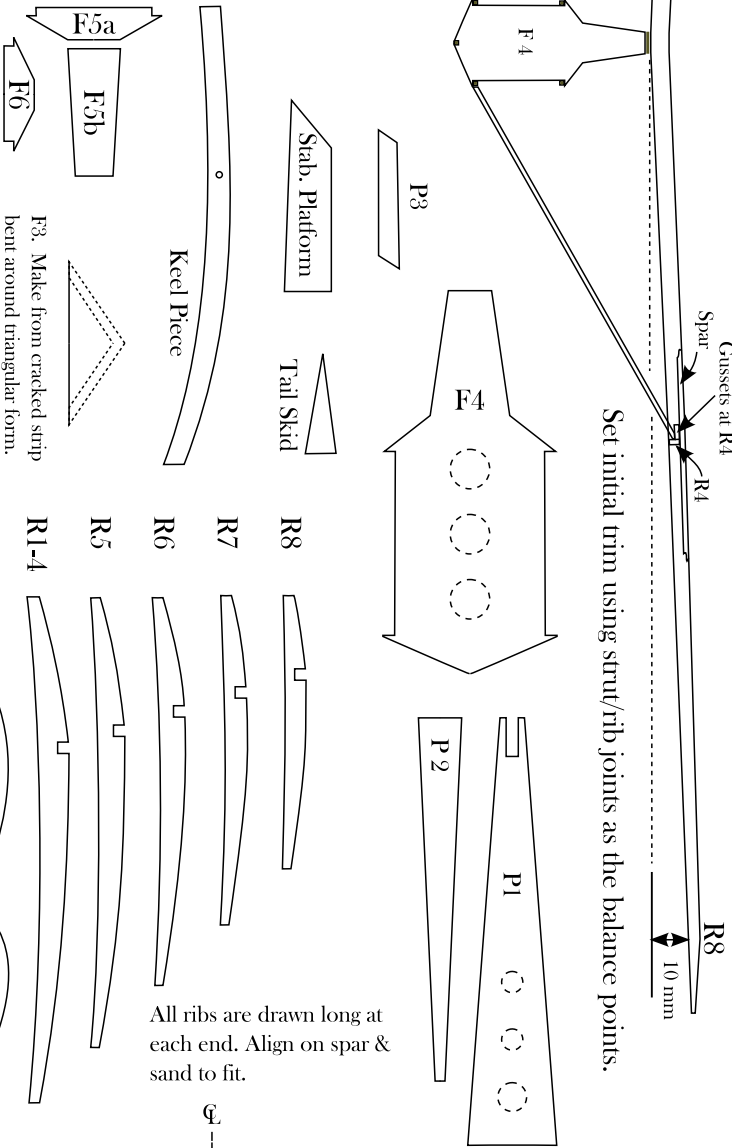
WILLOW WREN.
BILL MANUEL, 1932
An Indoor Scale Glider.
Plan by Peter Smart



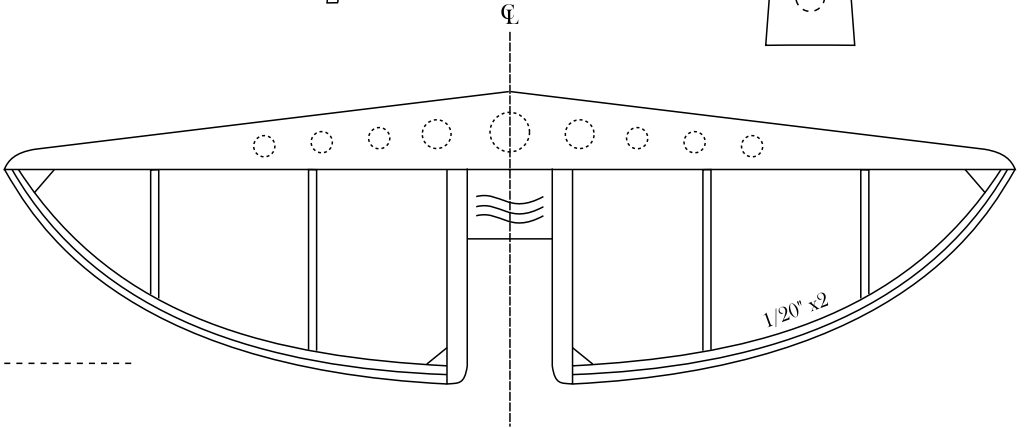
Bend nose stringer before fitting.



F3. Make from cracked strip bent around triangular form.



All ribs are drawn long at each end. Align on spar & sand to fit.



Weight reducing voids shown as dashed circles in larger sheet parts are optional..